



1st Prague Chess Autumn

24th – 26th September 2021

regulations version 1.2 – 11th August 2021



Organizer: [Chess Club Dopravní podnik Praha, z.s.](http://www.skdp.cz)

Venue: [EA Hotel Populus](http://www.eahotels.cz), U Staré cihelny 2182/11, Prague 3 – Žižkov, Czech Republic

Public transport: Bus 133, 146, 155 – [station Malešická](http://www.mhd.cz)

WEEKEND FIDE RATED TOURNAMENT IN CLASSICAL CHESS



**1st PRAGUE
CHESS
AUTUMN**

5-rounds Open
90 min + 30s/move

FRI 24.-26.9. 2021 SUN

EA Hotel Populus
Prague, Czech Republic

Further information on www.skdp.cz/autumn



Event date: 24th September 2021 (Friday) – 26th September 2021 (Sunday)

Participants: Czech players unregistered, registered in the [Czech Republic Chess Federation](http://www.czechchess.cz), foreign players registered in [FIDE](http://www.fide.org) with FIDE ID number

System: open tournament played by the Swiss system for 5 rounds

Rating ELO: rated for ELO FIDE and Czech ELO Rating Lists

Playing time: 90 minutes + 30 seconds for every move made for each player

Tournament director: Růžena Příbylová, e-mail: ruzena.pribylova@gmail.com, tel. +420-777 071 192

Chief arbiter: FA Václav Soukup

Chess equipment: provided by the organizer for the registered players

Online transmission: selected games from the tournament will be transmitted online to the internet





1st Prague Chess Autumn

24th – 26th September 2021

regulations version 1.2 – 11th August 2021



Pairings:

[Swiss-Manager](http://chess-results.com/tnr572745.aspx). The results will be published on the website of the <http://chess-results.com/tnr572745.aspx>. Each player can take one round off from the tournament during the first two rounds. He shall notify the arbiter of his intention before the pairing. He will not be paired for this round and a draw will be entered in the table.

Waiting time:

A player who does not appear within the set limit of 60 minutes after the start of the round loses the game by default and will not be paired for the next round.

Ranking:

1st number of points, 2nd medium Buchholz without worst result, 3rd higher average ELO of opponents, 4th Buchholz, 5th mutual game, 6th drawing of lots

Prices:

Ranking	Price
1 st place	5 000 CZK
2 nd place	3 500 CZK
3 rd place	2 500 CZK
4 th place	1 500 CZK
5 th place	1 000 CZK
6 th place	500 CZK
best woman player (min. 3 players)	750 CZK
best senior player 65+ (born 1956 and earlier, min. 3 players)	750 CZK
best players in the categories from 10 till 20 years	cups and medals

According to Hort system, financial prices are divided into as many players as the prizes are listed. Prices are guaranteed with a minimum of 60 players participating and with a minimum of 3 players within the categories. Winning more prizes is possible. With a lower number of participants, the organizer reserves the right to adjust the prize fund. If the winner does not take the prize personally at the closing ceremonial, then it will be forfeited in favour of the tournament organizer.

Entry fee:

Category	Entry fee
Entry fee	1 000 CZK / 40 EUR
- discount for the players with ELO FIDE registered until deadline September 16, 2021 from the clubs of Prague Chess Association or The Central Bohemian Regional Chess Association, or for the players accommodated in EA Hotel Populus or for the subscribers of Československý šach chess magazine	discount -400 CZK / -16 EUR
- discount for the players without ELO FIDE registered until deadline September 16, 2021 from the clubs of Prague Chess Association or The Central Bohemian Regional Chess Association, or for the players accommodated in EA Hotel Populus or for the subscribers of Československý šach chess magazine	discount -200 CZK / 8 EUR
- players with titles GM, IM, WGM, WIM: no entry fee – free of charge	0 CZK / 0 EUR

Applications:

by e-mail to ruzena.pribylova@gmail.com until September 16, 2021 for discounts.





1st Prague Chess Autumn

24th – 26th September 2021

regulations version 1.2 – 11th August 2021



Tournament schedule:

Day	Date	Time	Event
Friday	24.09.2021	16:30 – 17:00	Registration and submitting COVID-19 Declaration
		17:00 – 17:15	Final starting list and 1 st round pairing
		17:15 – 17:25	Opening ceremony
		17:30 – 21:30	1 st round
Saturday	25.09.2021	09:00 – 13:00	2 nd round
		16:00 – 20:00	3 rd round
Sunday	26.09.2021	09:00 – 13:00	4 th round
		15:00 – 19:00	5 th round
		30 minutes after last game	Closing ceremony

Entry fee: paid by bank transfer to the following account in EUR (SEPA payment) or in CZK:

IBAN: CZ08 2010 0000 0029 0201 5681, BIC (SWIFT): FIOBCZPPXXX

Reference = FIDE ID or registration ID of the Czech Republic Chess Federation

Name of consignee: Šachový klub Dopravní podnik Praha, z.s.

Address of consignee: Karlínské náměstí 7, Praha 8, CZ-186 00, Czech Republic

The entry fee includes a fee for the rating of the tournament to ELO FIDE and Czech ELO Rating Lists.

Registration: begins by placing the player on the starting list published on the internet at chess-results.com, is conditional on payment of the entry fee to the above bank account and is completed by submitting of a signed Declaration of COVID-19 absence of infection during the registration on the first day of the tournament till 17:00 o'clock.

Other conditions: The accompanying person over the age of 18 is responsible for the safety of the players under 18 years during the tournament. The participant of the tournaments agrees that the acquired data and results of the tournament for rating to the ELO FIDE and Czech ELO Rating Lists can be published, as well as the games and photos from this tournament on the organizer's website. Consent to the publication of photos can be revoked at any time and the published photos will be removed from the page. Players not registered in the Czech Republic Chess Federation agree to the communication of their year of birth necessary for registration in FIDE.



1st Prague Chess Autumn is held with the financial support of the capital city of Prague.

ČESKOSLOVENSKÝ
šach
media partner of the tournament

Prague, 11th August 2021

Růžena Přibyllová





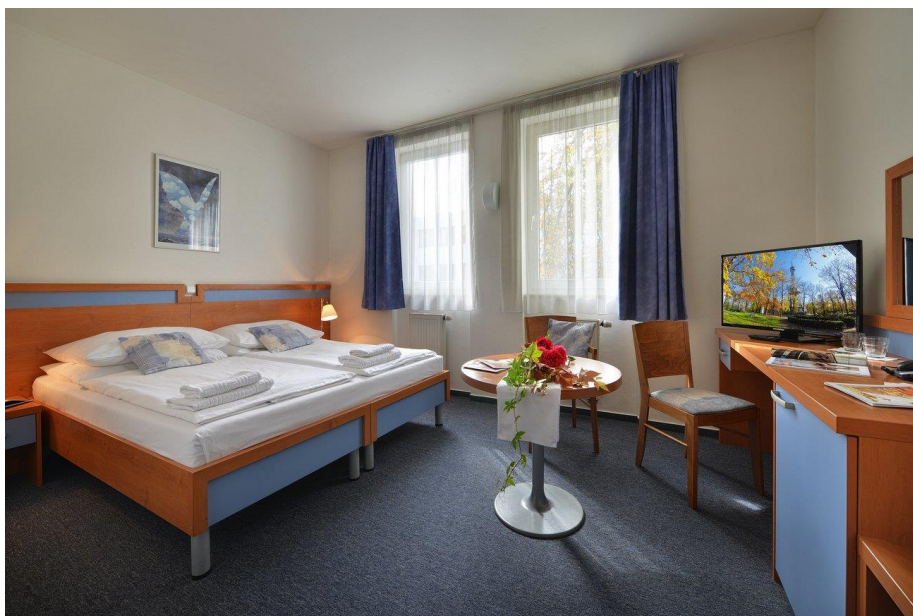
1st Prague Chess Autumn

24th – 26th September 2021

regulations version 1.2 – 11th August 2021



Accommodation: [EA Hotel Populus](#), U staré cihelny 2182/11, Prague 3 – Žižkov, Czech Republic



Special discounts provided to the players by EA Hotel Populus:

- single room 800 CZK / 32 EUR
- double room 1100 CZK / 44 EUR
- three beds room 1400 CZK / 56 EUR
- four beds room 1700 CZK / 68 EUR

The prices are per room and night including VAT and breakfast.

The Prague local fee of 21 CZK (0,84 EUR) per person over 18 years and night will be charged.





1st Prague Chess Autumn

24th – 26th September 2021

regulations version 1.2 – 11th August 2021



Boarding: [special discounts provided to the players by EA Hotel Populus](#)



Lunch and dinner:

Dinner – Friday 24.09.2021 – 200 CZK / 8 EUR

Lunch – Saturday 25.09.2021 – 200 CZK / 8 EUR

Dinner – Saturday 25.09.2021 – 200 CZK / 8 EUR

Lunch – Sunday 26.09.2021 – 200 CZK / 8 EUR

Full board package (2x dinner and 2x lunch):
instead of ~~800 CZK / 32 EUR~~ for special price 640 CZK / 26 EUR

Accommodation and boarding reservations – contact:

Martin Axmann

Telephone: +420 271 090 838

E-mail: axmann@euroagentur.cz





1st Prague Chess Autumn

24th – 26th September 2021

regulations version 1.2 – 11th August 2021



Hygiene measures in the current status valid as of 11th August 2021:

The 1st Prague Chess Autumn will be held under strict hygienic conditions. The premises of the EA Hotel Populus allow to create such conditions (spacing between tables, regular disinfection of halls, ventilation, etc.) so that the event can take place and tournament participants are protected against infection as much as possible.

The tournament is allowed under the conditions of the presence of a maximum of 100 people, provided that all persons present comply with the following **MEASURES**, which the organizer is obliged to check:

- a) person has undergone an RT-PCR test for SARS-CoV2 virus with negative results no more than 7 days ago;
- b) a person has undergone a NEGATIVE ANTIGEN TEST FOR SARS-CoV-2 virus antigen with negative results no more than 72 hours ago
- c) the person has been vaccinated against COVID-19 and proves by the national certificate of vaccination or the national certificate of completion of vaccination that the vaccination has expired:
 - i) for at least 14 days from the administration of the second dose of vaccine in the case of a two-dose schedule according to the Summary of Product Characteristics (SPC), or
 - (ii) at least 14 days after administration of a dose of vaccine in the case of a single dose schedule under the SPC;

A national certificate of vaccination is considered to be a written certificate issued in an official language of a Member State of the European Union or in English by an authorized entity operating in the Czech Republic or another Member State of the European Union, the model of which is published in the list of recognized national certificates on the Ministry of Health website Of the Czech Republic, which contains data on the vaccinated person, the type of vaccine administered, the date of administration of the vaccine and the identification of the subject who issued the certificate; a national vaccination certificate is also considered to be a vaccination certificate issued in accordance with the European Union Regulation on the EU digital certificate COVID; A national certificate of completed vaccination is considered to be a written confirmation issued at least in English by an authorized entity operating in a third country to a Czech citizen or a European Union citizen with a temporary residence permit or permanent residence permit issued by the Czech Republic that vaccination with a substance approved by the European Medicines Agency has been fully completed, and its model is published in the list of recognized national certificates on the website of the Ministry of Health of the Czech Republic; the written certificate must contain details of the person to be vaccinated, the type of vaccine administered, the date of administration of the vaccine, the identification of the subject who issued the certificate and these data must be verifiable by remote access directly from the written certificate; or

- d) the person has undergone a laboratory confirmed COVID-19 disease, has expired the isolation period under the current emergency measure of the Ministry of Health and has not passed more than 180 days since the first positive POC antigen test for sars-cov-2 or RT-PCR virus antigen test for SARS-CoV-2 virus;
- e) the person on the spot undergoes a preventive antigenic test to determine the presence of SARS-CoV-2 virus antigen intended for self-testing or authorised by the Ministry of Health for use by a lay person, with negative results;
- f) a person at a school or school facility has passed a test no later than 72 hours ago to determine the presence of SARS-CoV-2 virus antigen, which is intended for self-testing or authorised by the Ministry of Health for use by a lay person, with a negative result, this is evidenced by an affidavit or an affidavit by the legal representative of the person or by a certificate of the school

If a player fails to comply with at least one of the above measures, he is not allowed to play and loses the game by default.





1st Prague Chess Autumn

24th – 26th September 2021

regulations version 1.2 – 11th August 2021



The organizers are obliged to register the participants. In order to prevent the possible further spread of the pandemic, viewers are prohibited from entering. Only tournament participants and accompanying persons for players under the age of 18 can enter the halls. All participants and accompanying persons in the event must be considerate and respect other restrictions:

- immediately use disinfection placed on stands after entering the building
- indoors only with respiratory protective equipment – respirator
- **respiratory protective equipment not necessary during the game**
- keep spacing and communication to a minimum
- before and after the game, do not shaking hands, greeting your opponent with a nod of the head
- submit the signed Declaration of COVID-19 absence of infection before the first round and thereof repeatedly, depending on the **MEASURE**, including a copy of the proof of the test carried out with a negative result, or of the vaccination carried out, or of the confirmed COVID-19 disease

Restrictions will be regularly adjusted according to the regulations of the Hygiene Station of the Capital City of Prague or the Ministry of Health of the Czech Republic. We believe that we will be able to create a safe environment and the maximum number of players will participate in tournaments.

Declaration of COVID-19 absence of infection

I, the undersigned _____, born _____,
living _____
e-mail _____ mobile: _____
represented by a legal representative (players under the age of 18, complete according to the facts):
_____, declare, that:

- I am not currently diagnosed with COVID-19 positive and meet at least one of the following **MEASURES**:
 - a) RT-PCR test for SARS-CoV2 virus with negative result no more than 7 days ago
 - b) POC test for SARS-CoV-2 virus antigen with negative result no more than 72 hours ago
 - c) COVID-19 vaccinations, supported by a national certificate of vaccination
 - d) confirmed COVID-19 disease and no more than 180 days have passed since the first positive POC antigen test for SARS-CoV-2 or RT-PCR virus antigen test for SARS-CoV-2 virus
 - e) on the spot preventive antigenic test to determine the presence of SARS-CoV-2 virus antigen with negative results
 - f) test for the presence of SARS-CoV-2 virus antigen with negative results at school or school equipment no more than 72 hours ago
- I undertake to inform the management of the Prague Chess Autumn without delay in changing the above statements.

Prague, date _____

signature of the player
(for 18 years of the representative)

